

MYBAG USER SETUP

MyBag LINK Enabled technology is a collaborative effort between Foresight Sports and Bushnell Golf, designed to generate real time personalized club and PlayAs recommendations based on current conditions at your location. The MyBag program allows players to establish and share personalized club assessment data between the Foresight Sports and Bushnell Golf environments for use in the Bushnell Golf App and Pro X3 Series LINK Enabled rangefinders.

This technology represents a leap forward in distance measurement and personalized, [data-driven performance enhancement for golfers of all levels.](#)

MyBag Setup

Setup Steps:

1. Download Foresight App and create an account.
2. Connect the launch monitor to the Foresight App.
3. Complete a MyBag assessment profile in the Foresight App.
4. Download the Bushnell Golf App and create an account.
5. Link Bushnell Golf App account to Foresight App account.
6. Register your Pro X3 Series LINK Enabled laser rangefinder to the Bushnell Golf App.

Compatible Hardware

Laser Rangefinders:

- ProX3+ LINK
 - ProX3 LINK
 - ProX3+ (Most Recent Firmware Required)
 - ProX3 (Most Recent Firmware Required - Coming Soon)
- ** Update Firmware By Connecting To Bushnell Golf App & Selecting the DEVICE UPDATE option.

Foresight Sports & Bushnell Golf Launch Monitors

- GCQuad
 - QuadMax
 - Falcon
 - GCHawk
 - GC3
 - GC3s
 - LPi
 - Launch Pro
- (Foresight App Connection Required)

Download The Apps

Use these QR codes to download
and create accounts.

Foresight Sports Mobile App

Scan the code
to download the
Foresight App and
create an account.



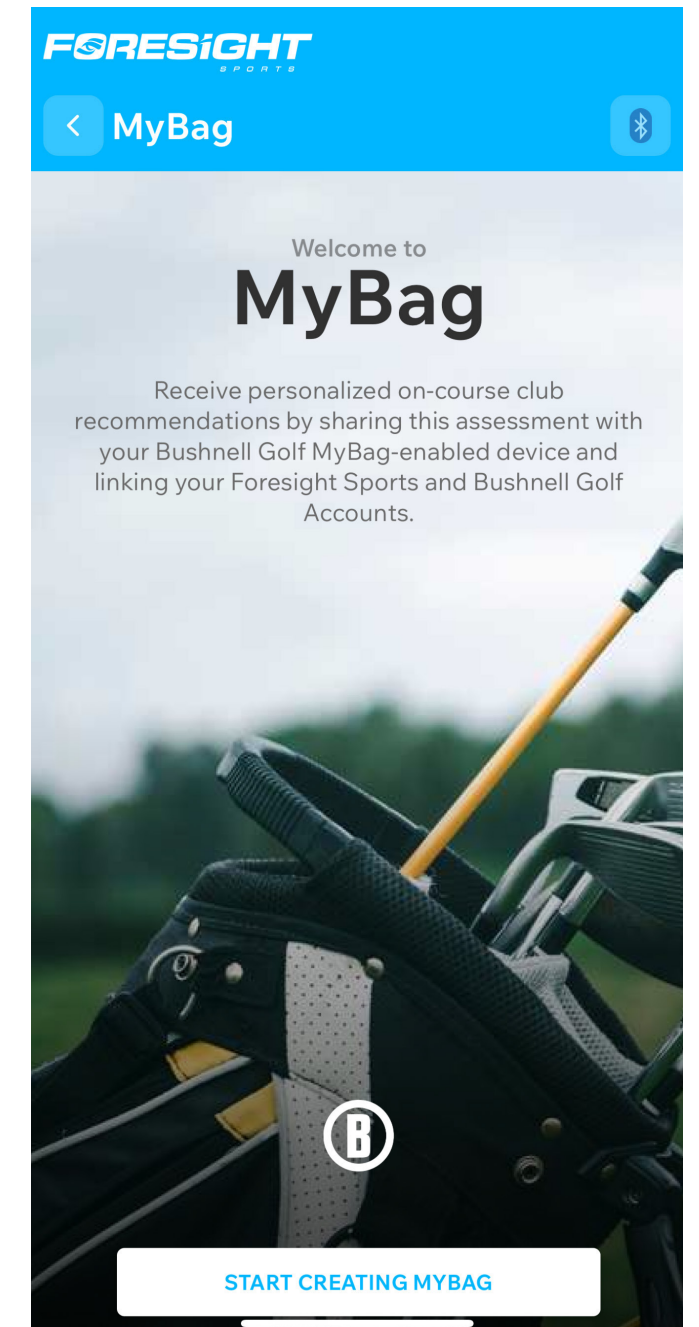
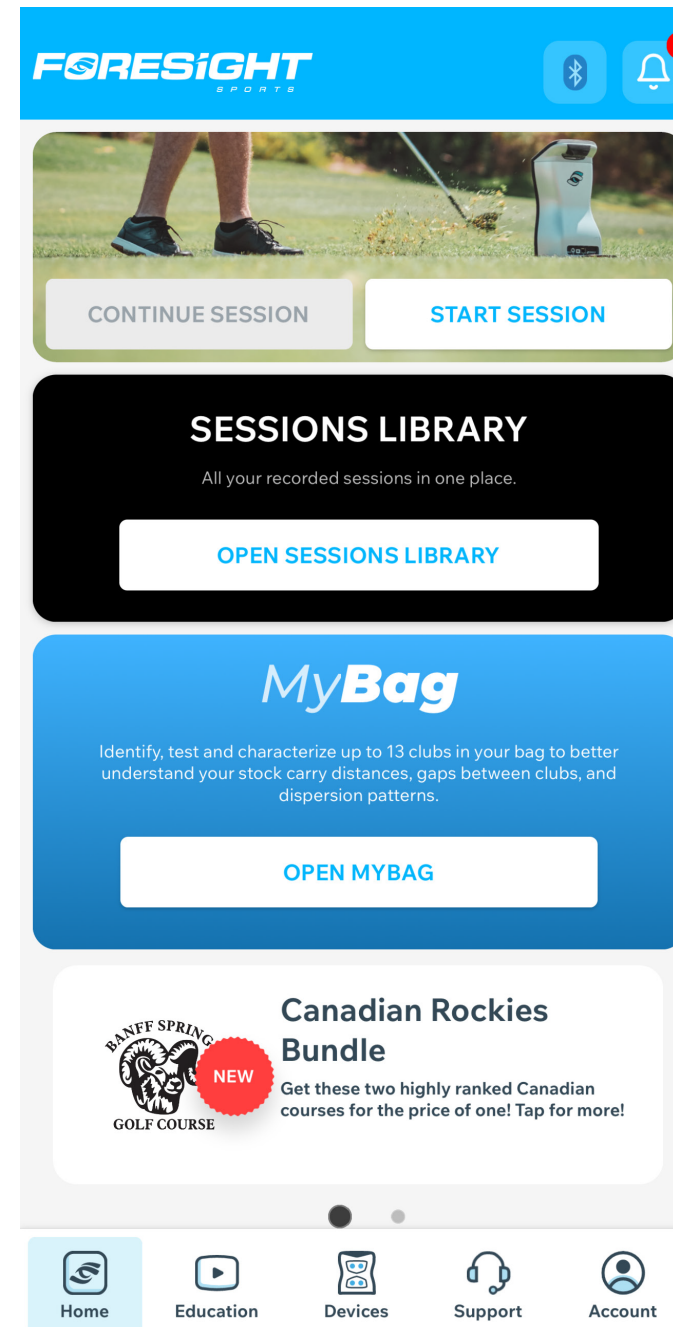
Bushnell Golf Mobile App

Scan the code
to download the
Bushnell Golf
Mobile App and
register your Pro
X3 Series Laser
Rangefinder.



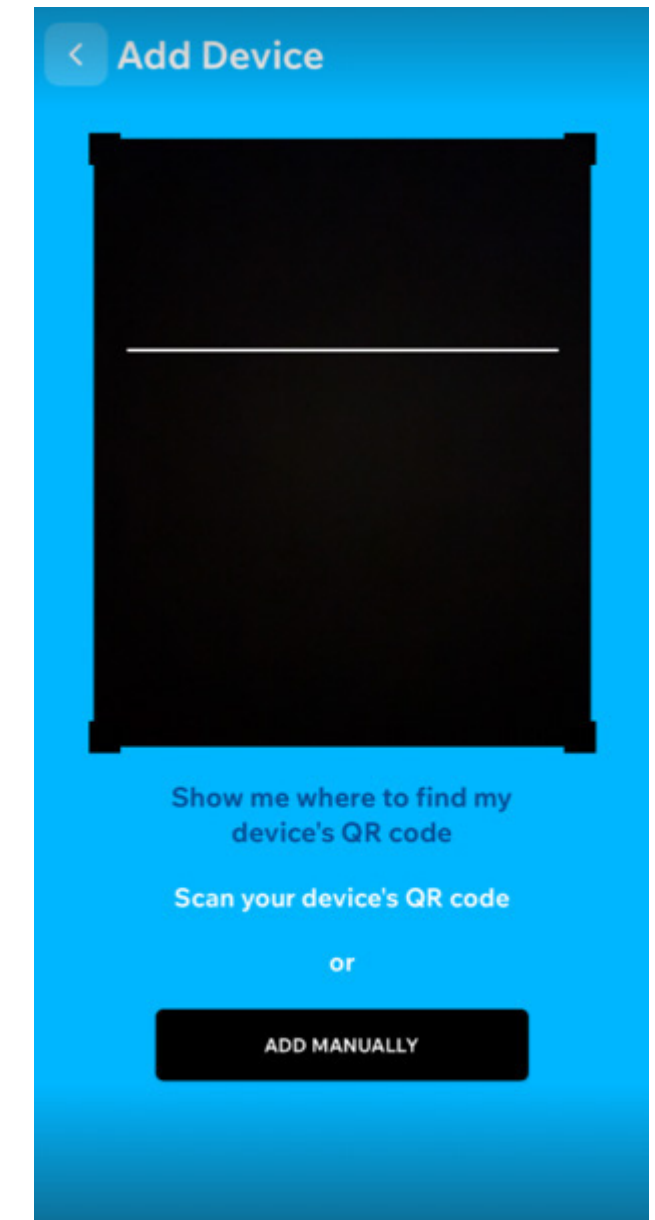
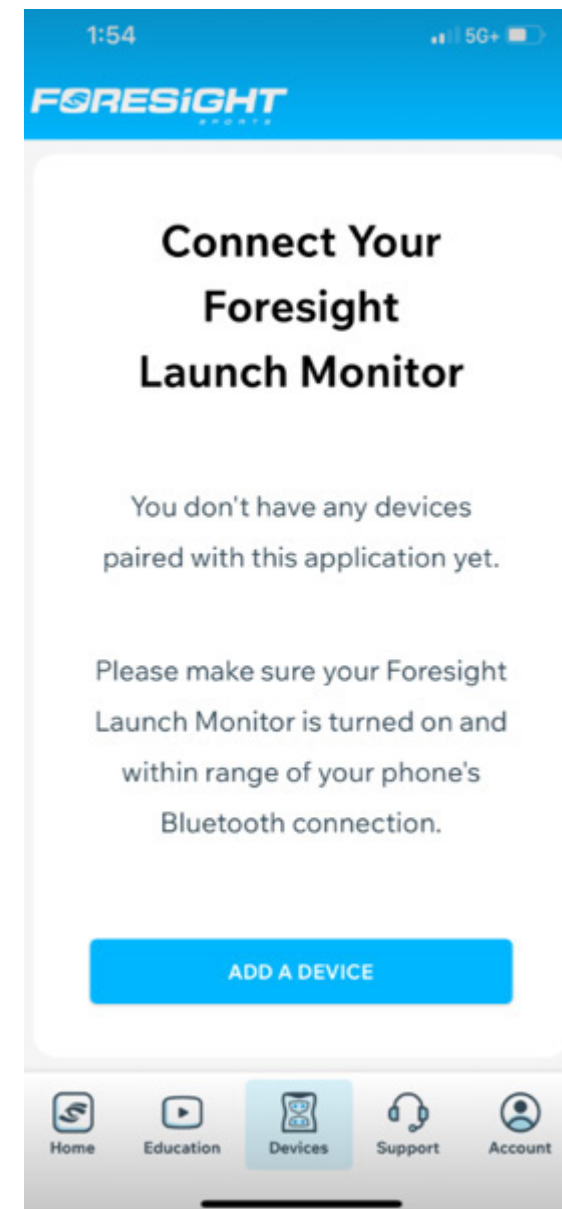
Create MyBag Profile in the Foresight App

Once you have downloaded the Foresight App select MyBag from the homepage to create a MyBag profile.

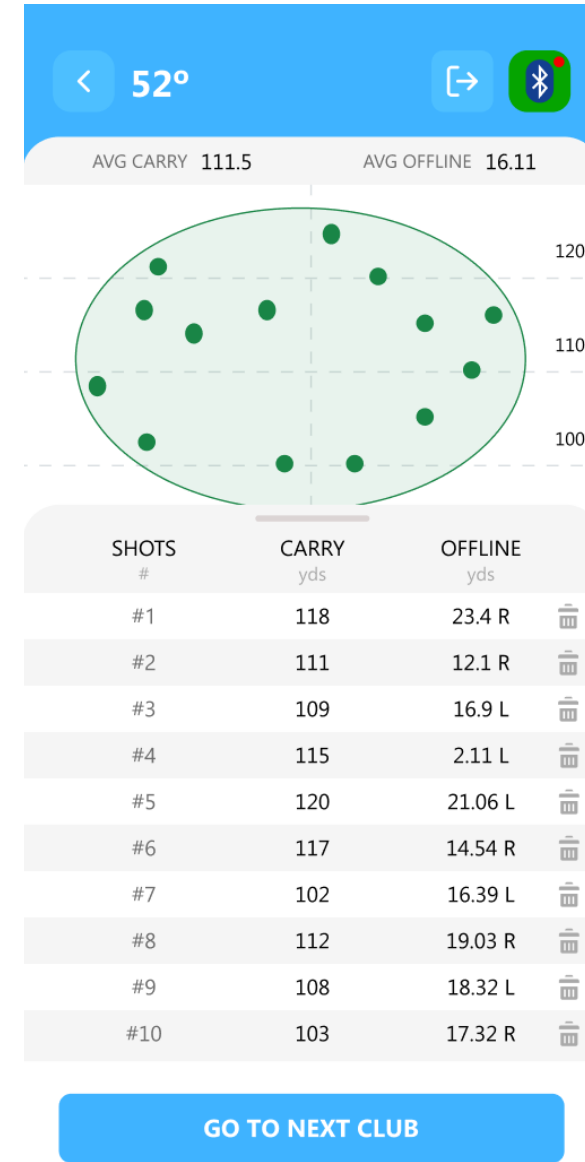
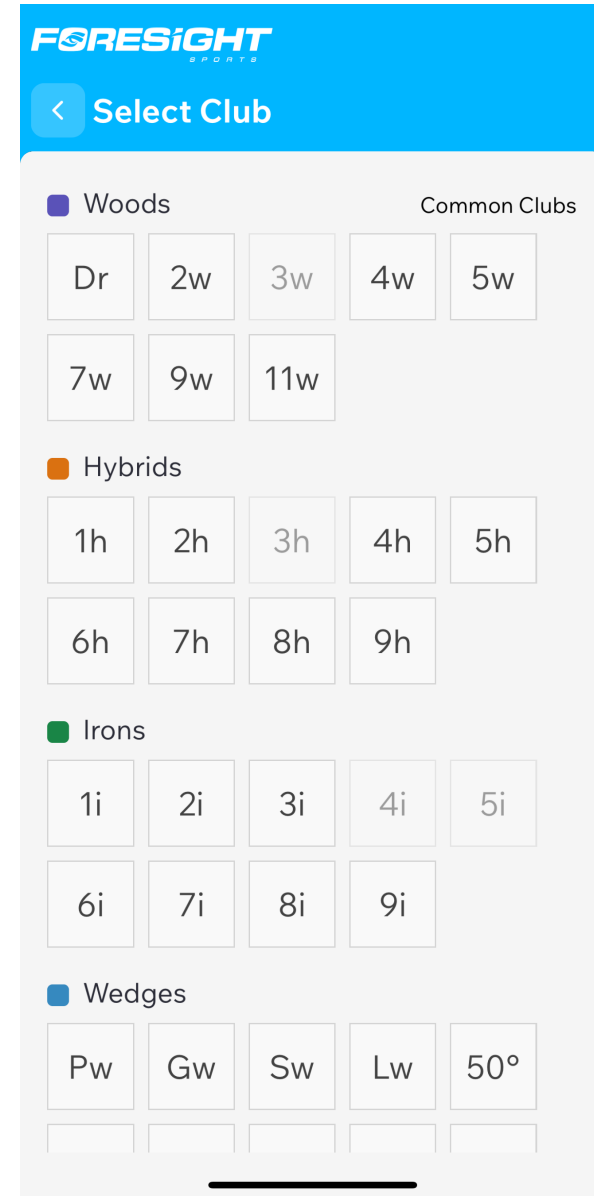
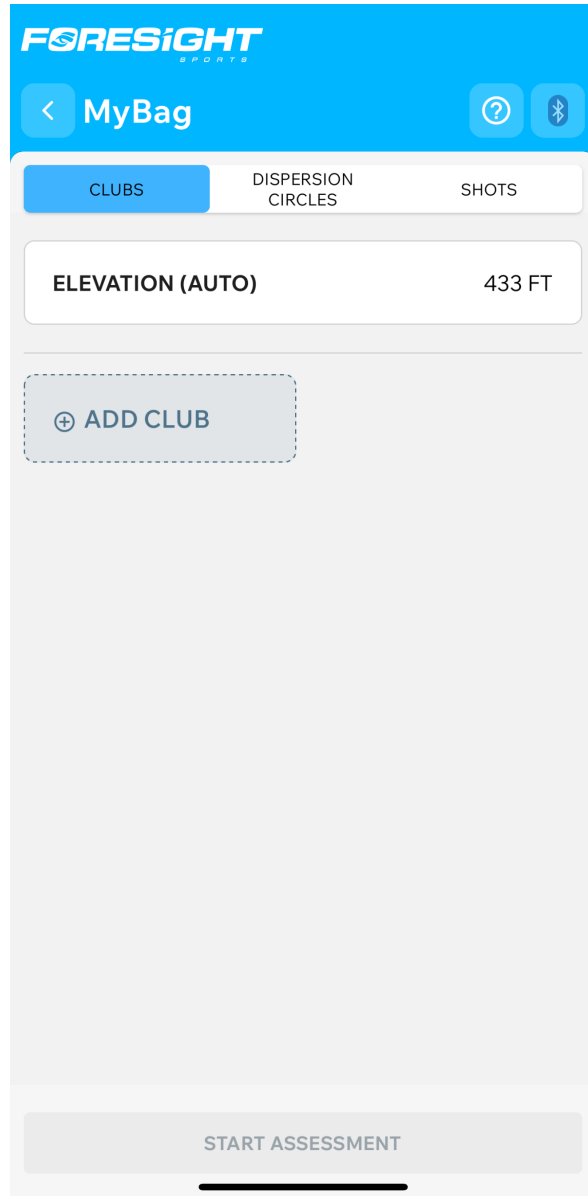


Launch Monitor App Connection

- From the Foresight Sports App see Devices
- Select Add A Device
- Scan the QR code at the bottom of the device or select Add Manually for overhead-mounted devices.
- To add a device manually enter the device's serial number or scan for nearby devices.



Steps to Create a MyBag Profile



CLUB	OFFLINE yds	CARRY yds	GAP yds
Dr Ping G43...	6.0	263.6	26.4
3w Ping G43...	6.4	237.1	17.2
5w Ping G43...	-16.3	219.9	4.6
2i Srixon ZX...	-12.6	215.4	16.2
4i Srixon ZX7	-6.8	199.2	5.9
5i Srixon ZX7	-12.9	193.3	15.3
6i Srixon ZX7	-10.4	178.0	10.3
7i Srixon ZX7	-17.0	167.7	8.1
8i Srixon ZX7	-28.1	159.7	18.9
9i Srixon ZX7	-13.9	140.8	

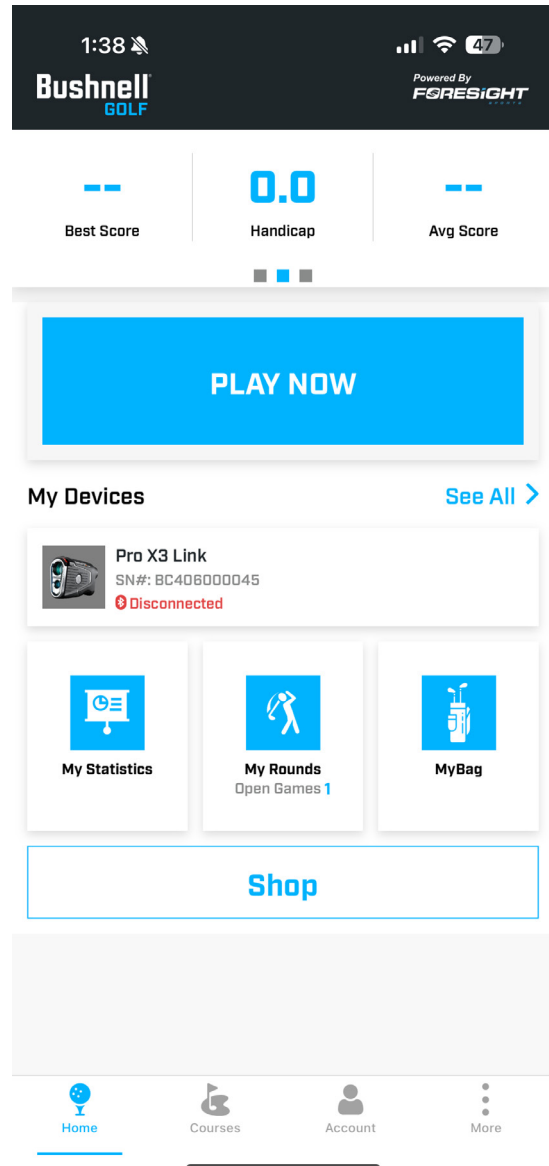
1. Once in MyBag press on "ADD CLUB"

2. From the MyBag profile section of the Foresight App select clubs for your assessment.

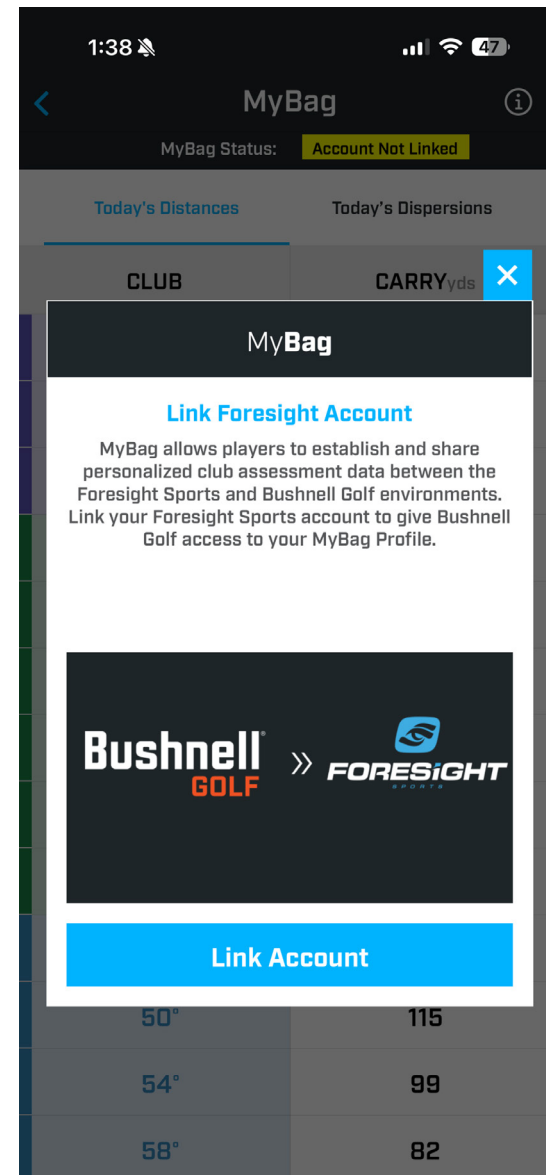
3. Hit 3 -7 shots with each club using a Foresight Sports Launch Monitor.

4. Complete the MyBag Assessment and view Summary.

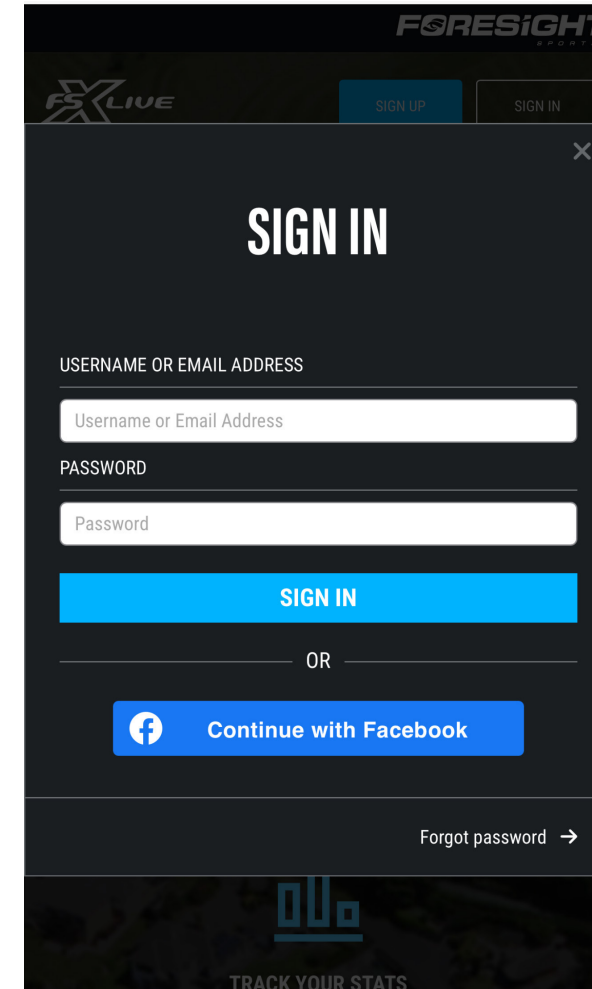
Account Linking Process



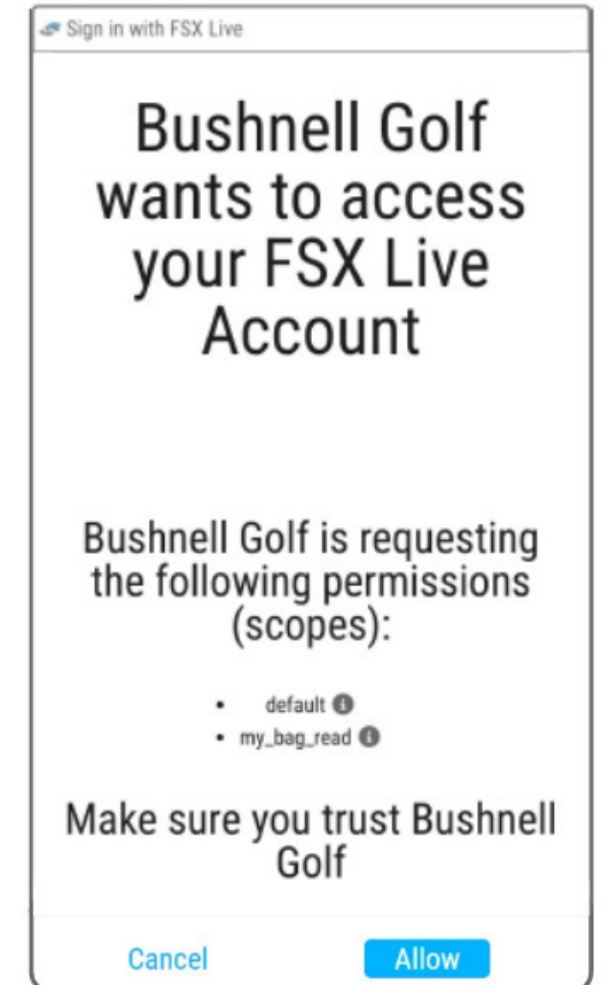
1. After downloading the Bushnell Golf App and creating an account select MyBag from the home screen



2. Click on the screen below to link your accounts



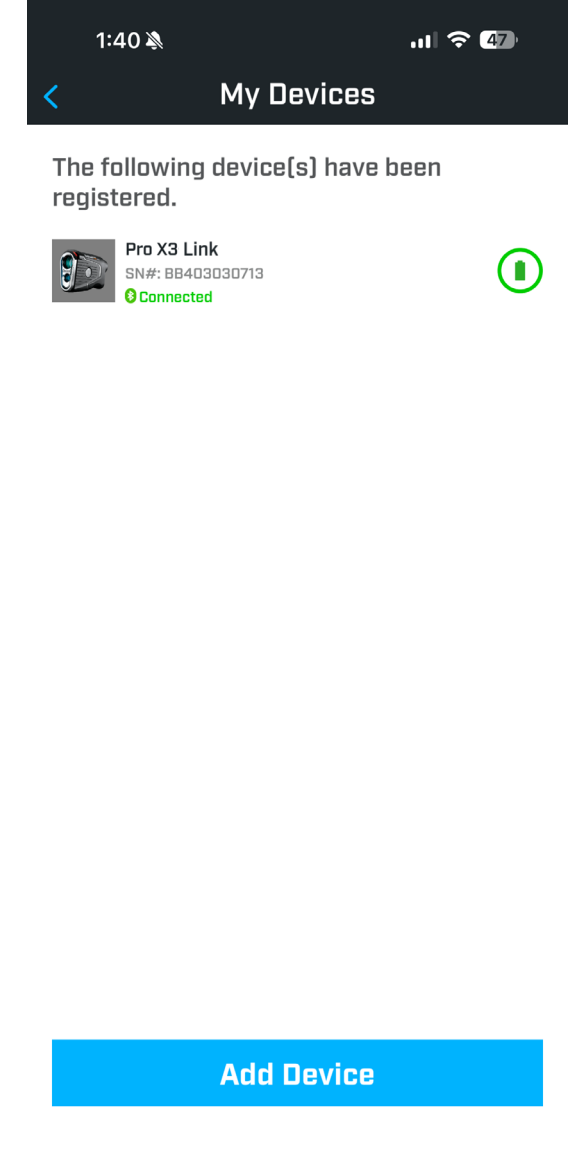
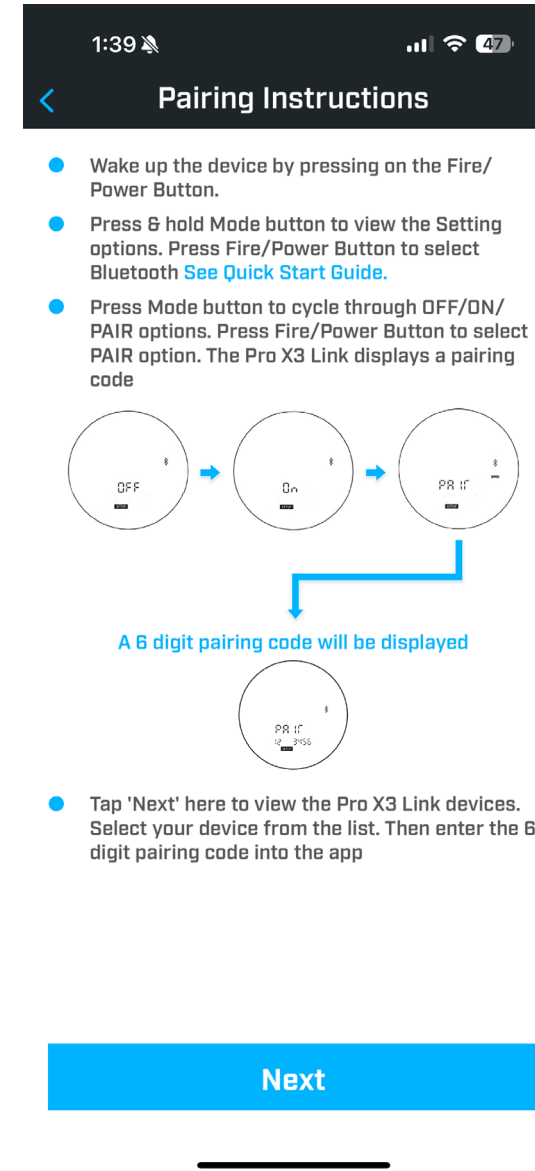
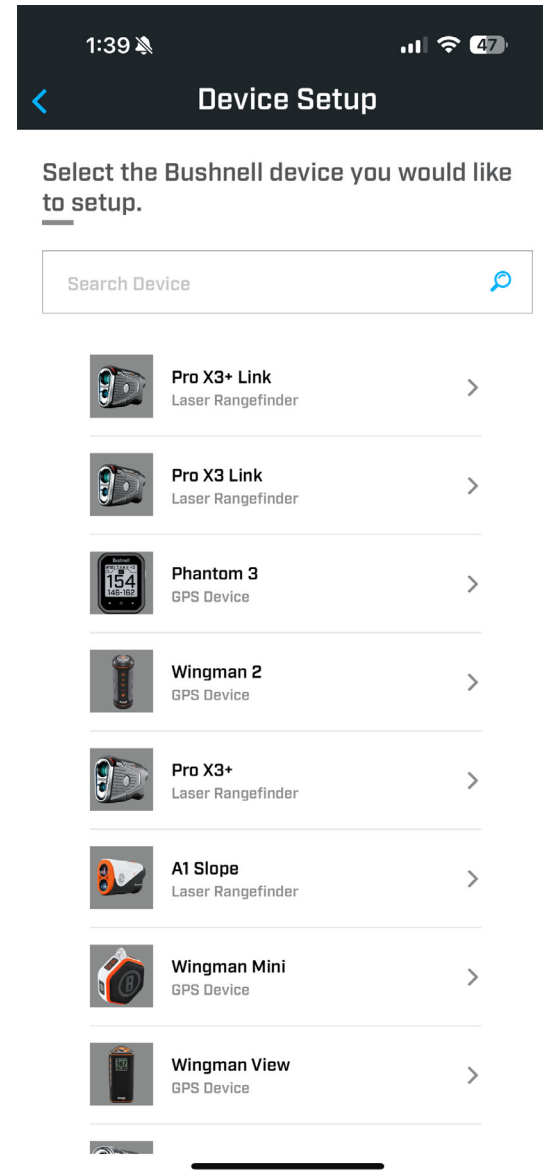
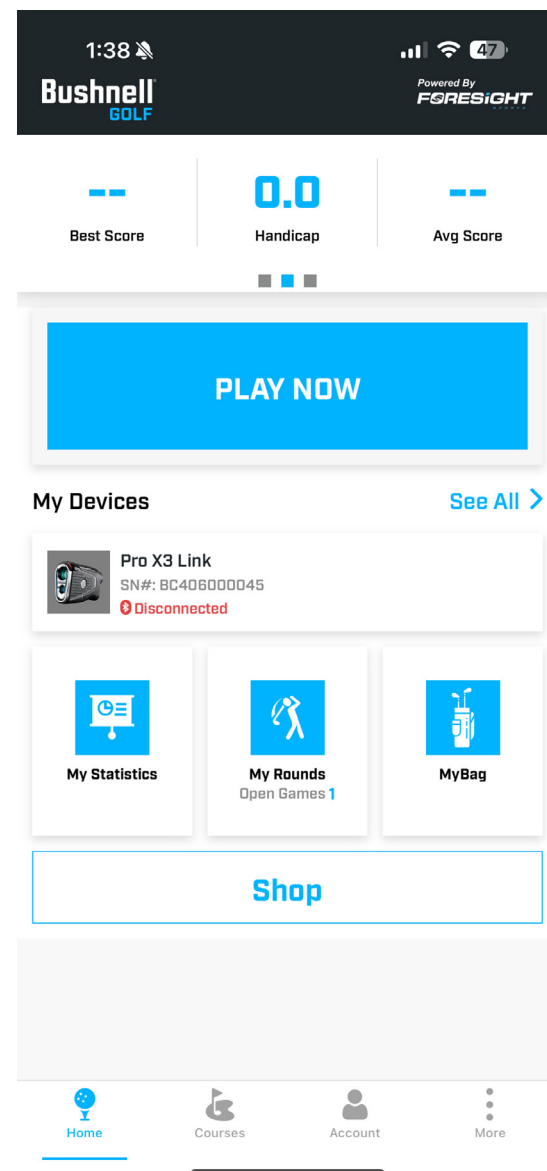
3. Enter Foresight App credentials to confirm the link



4. Allow Data Transfer between your accounts

Connecting to the Bushnell Golf App

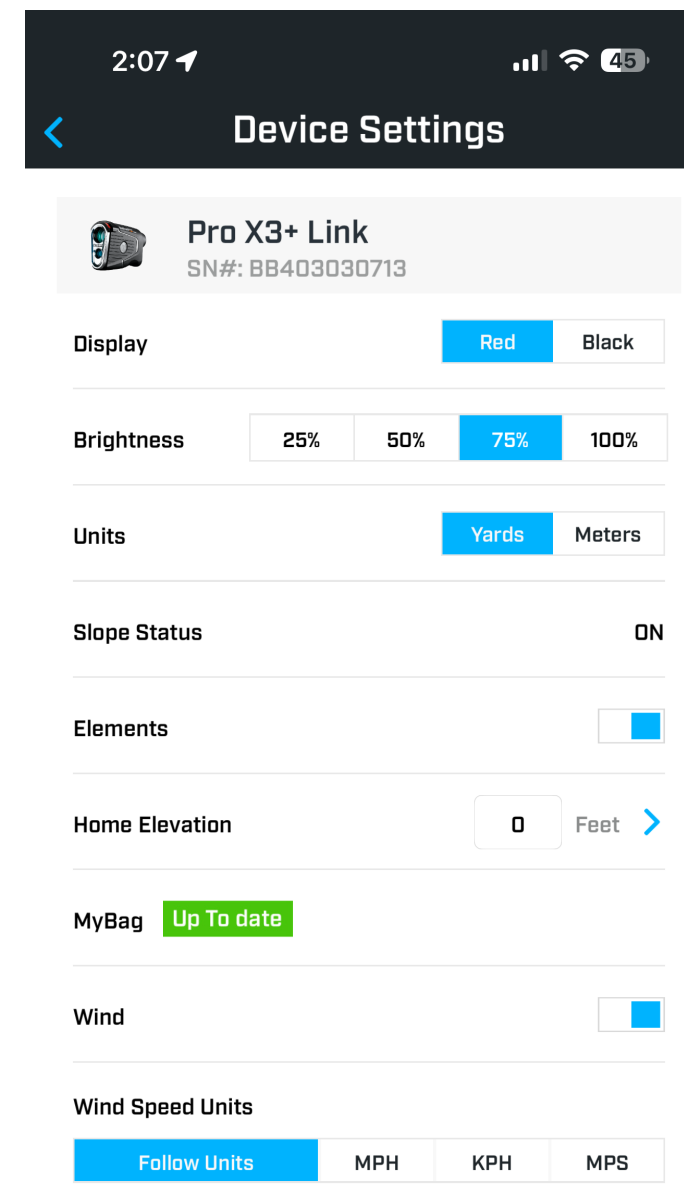
Once the Bushnell Golf App is downloaded and installed on your phone, follow the instructions on the app in My Devices to pair your Pro X3 Series rangefinder. Make sure Club is set to On in the Mode settings of your rangefinder.



Pro X3 Series Device Settings

Congratulations your MyBag LINK is complete!

A status button is present that indicates if the MyBag is available and if it is up to date.



**What
You Should
See Next**

Bushnell Golf App

Today's MyBag Distances

The Bushnell Golf App supplies you with Today's MyBag distances. This will show your personalized carry distances compensated for today's conditions including temperature, elevation and barometric pressure.

Gain access to a personalized compensated yardage guide built from your Foresight Sports GC Link assessment data.

Distances can be referenced in the Bushnell Golf App before or during the round to see how far your clubs are flying today.

Tuesday: 84°

CLUB	CARRY yds
Dr	242
3w	233
3h	213
4i	194
5i	182
6i	171
7i	162
8i	147
9i	128
PW	119
GW	109
54	100
60	76

Friday: 56°

CLUB	CARRY yds
Dr	255
3w	245
3h	225
4i	205
5i	192
6i	180
7i	170
8i	155
9i	135
PW	125
GW	115
54	105
60	80

Bushnell Golf App

Hole View

Get Club Recommendations and Dispersion Ellipses overlaid on the hole view.

This feature allows the golfer to use their MyBag assessment data to help make decisions on the course.

Dispersions are shown relative to the layup point. As you move the target point the dispersions will move to match the new target line.

As you move the target point your dispersions move dynamically from the starting point the dispersions will dynamically show or hide based on their proximity to the target point.



Pro X3 Series

MyBag Features

Once you create a MyBag profile on the Foresight App and your Bushnell Golf App accounts are linked you will be able to see personalized club recommendation and PlayAs distances in your Pro X3 Series rangefinder.

Personalized PlayAs Distances compensate for Slope and current environmental conditions based on your club launch tendencies.

Personalized Club Recommendations allows you to receive club recommendations based on your shot assessment data and your personalized PlayAs distances.



Each time the Pro X3 Series connects to the Bushnell Golf Mobile App, the app checks if a new virtual bag of clubs and distances is available and updates if a new version is present.

Pro X3 Series

Example Screen

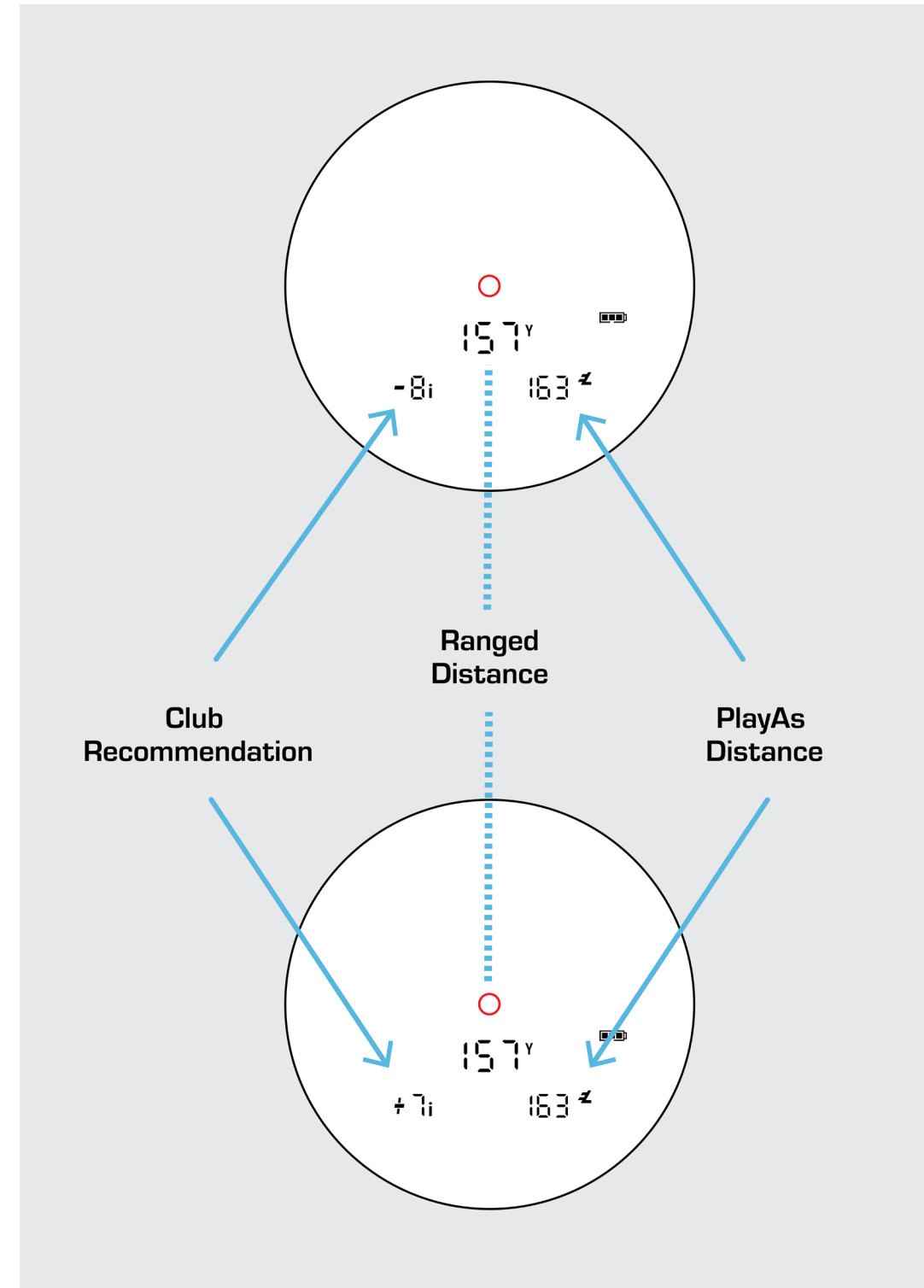
When a distance is ranged, the Pro X3 Series reports the ranged distance and the personalized PlayAs distance and recommends up to two clubs.

Example: The personalized PlayAs is 163 yards. The EL icon is showing, indicating that the PlayAs value is Elements-compensated. In this example, the club recommendation will show two clubs:

-8i indicates that the recommended club yardage short of the 157 ranged distance is the 8i.

+7i indicates that the recommended club yardage longer than the ranged distance is the 7i.

The -8i and +7i will toggle back and forth.



**THANK
YOU**