

# SIM IN A BOX™



## ASSEMBLY INSTRUCTIONS

SIM-IN-A-BOX PLAY PACKAGE



# ***TABLE OF CONTENTS***

---

|                       |       |
|-----------------------|-------|
| SPECIFICATIONS        | 1     |
| SAFETY INSTRUCTIONS   | 2     |
| WHAT'S INCLUDED       | 3     |
| OVERVIEW OF ENCLOSURE | 4     |
| FRAME ASSEMBLY        | 5-11  |
| ENCLOSURE ASSEMBLY    | 12-17 |

# **SPECIFICATIONS**

---

|                                       |   |
|---------------------------------------|---|
| <b>PRODUCT NAME</b>                   | <b>SIM-IN-A-BOX PLAY ENCLOSURE</b>  |
| <b>ENCLOSURE DIMENSIONS</b>           | <b>8'4" (H) x 10'10" (W) x 17' (D)</b>  |
| <b>RECOMMENDATIONS</b>                | <b>A STEP-STOOL OR LADDER WILL BE NEEDED DURING ASSEMBLY.</b><br><br><b>IT IS RECOMMENDED THAT AN ADDITIONAL PERSON ASSIST IN THE ASSEMBLY OF THIS ENCLOSURE.</b> |
| <b>WEIGHT</b>                         | <b>117 LBS.</b>   |
| <b>COLOR</b>                          | <b>BLACK SURROUND/FRAME<br/>WHITE IMPACT SCREEN</b>   |
| <b>SCREEN VIEWABLE DIMENSIONS</b>     | <b>7'7" (H) x 10'1" (W) x 12'7" (DIAG)</b>  |
| <b>RECOMMENDED SPACE REQUIREMENTS</b> | <b>MINIMUM OF 12' WIDTH,<br/>18' LENGTH, AND 9' CEILING HEIGHT</b>  |



# **SAFETY INSTRUCTIONS**

---

- Please pay close attention and make sure children, pets, and other spectators are at a safe distance when swinging a golf club inside the enclosure.
- Additionally, take every precaution to protect ceilings, walls, windows, vehicles, and neighboring homes.
- Be alert of where you stand and walk, especially when others are swinging golf clubs or hitting balls into the screen.
- Make sure the setup is far from gas lines, electric heaters, fireplaces, candles, or any other source of heat or fire hazard.
- When not in use, store neatly in a cool, dry location, and protected from weather elements and direct sunlight.
- Foresight Sports is not responsible for any damage to property and/or any personal injury.
- Be mindful of disconnected and falling pipe if not snapped/tightened properly.
- Do not hang from the enclosure.



# WHAT'S INCLUDED

## **SIM-IN-A-BOX PLAY ENCLOSURE**



(18) COLOR CODED SNAP-BUTTON POLES

(1) PREMIUM IMPACT SCREEN

(1) BLACK NYLON SURROUND

(4) FOAM PADDING STRIPS

(2) L-SHAPED CONNECTORS

(6) 3-WAY CONNECTORS

(2) SIDE BARRIER NETS

(2) SAND BAGS

(80) BALL BUNGEEES

# OVERVIEW

## **PREMIUM IMPACT SCREEN**



The Premium Impact Screen was designed to allow the image to fill in 100% of the screen, unlike other enclosure systems where there is white space at the top and bottom. Constructed of premium materials, your golf simulator screen displays in HD quality and is built tough to withstand golf ball strikes up to 250 MPH.

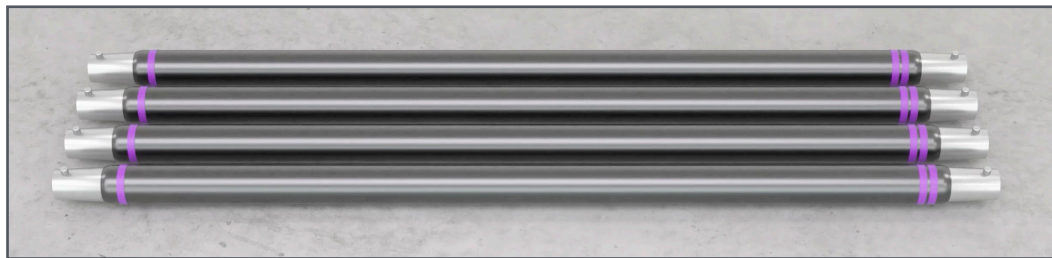
Golfers will notice a quieter sound, less bounce back, better image quality, and more durability from this screen compared to others. Heavy duty hook and loop velcro (hook side) is sewn into the perimeter of the finished edges and provides customers the flexibility to attach foam padding to protect the gap between the screen and the frame.



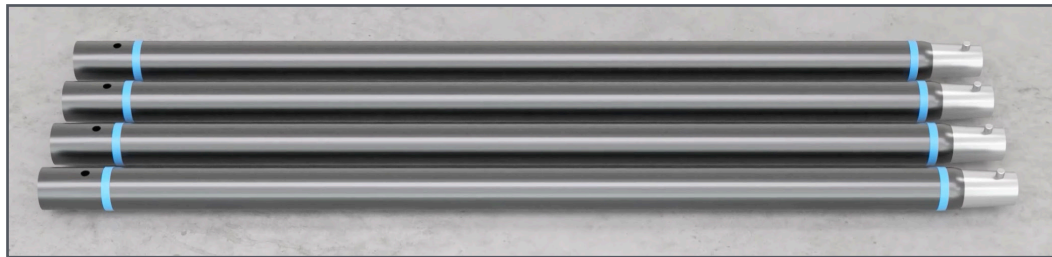
# FRAME ASSEMBLY

**1A**

Lay out poles and connectors. Organize by color.



(4) PURPLE poles with a single stripe on one end and double stripes on the opposite end.



(4) BLUE poles with single stripes on both ends.



(3) YELLOW poles with single stripes on one end and double stripes on the opposite end.



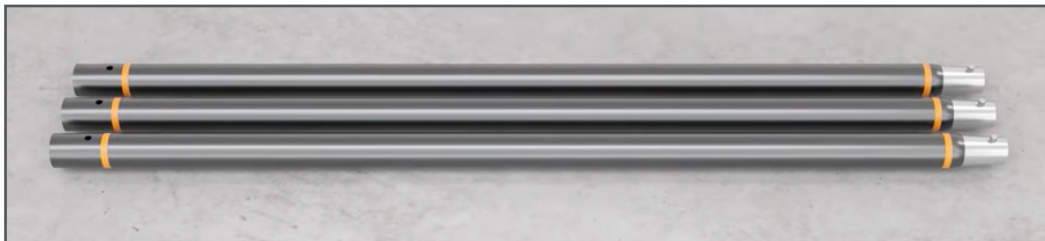
# FRAME ASSEMBLY

**1B**

(4) GREEN poles with single stripes on both ends.



(3) ORANGE poles with single stripes on both ends.



**TIP:** In the following steps, you will connect the GREEN single stripe end to the connector pieces. You will connect the YELLOW single stripe ends to the ORANGE double stripe ends.



# FRAME ASSEMBLY

2

Assemble the back lower poles first. Attach a YELLOW pole to an ORANGE pole. After, attach a 3-way connector to each end.



**REMEMBER:** Connect the double striped end of the YELLOW pole to the single striped end of the ORANGE pole. And the 3-way connectors will attach to the single striped end of each pole.

3

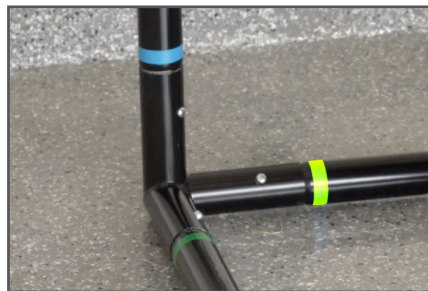
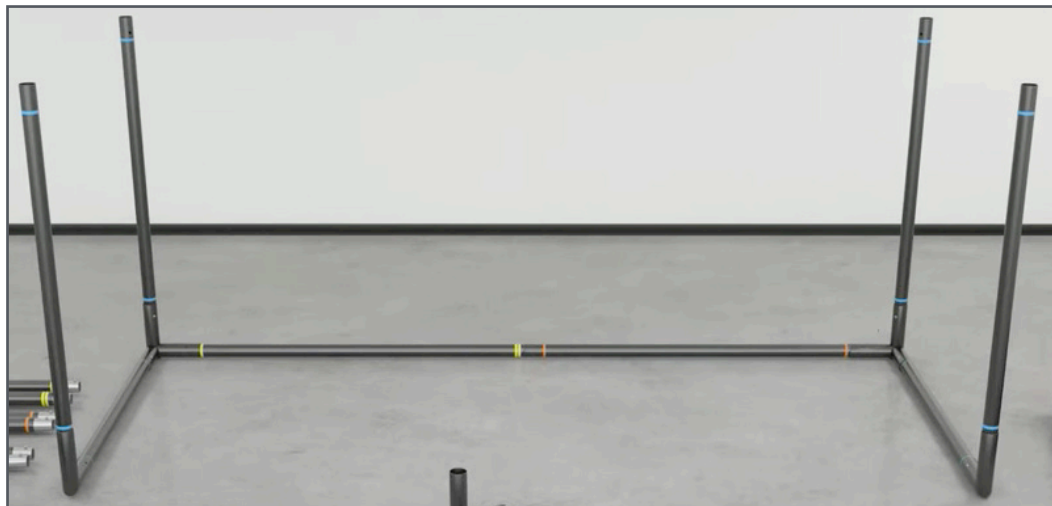
Assemble the entire lower section by attaching (2) GREEN poles to the 3-way connectors, and then attach the (2) L-shaped connectors to the ends of the (2) GREEN poles.



# FRAME ASSEMBLY

4

Connect (4) BLUE poles to the corner connectors that will act as bottom uprights for the structure



**TIP:** At this point in the assembly, make sure button snaps are fully engaged in each fitting. Also, this would be a good time to place the structure near its final location due to the added weight of the screen and surround in future steps.



# FRAME ASSEMBLY

5

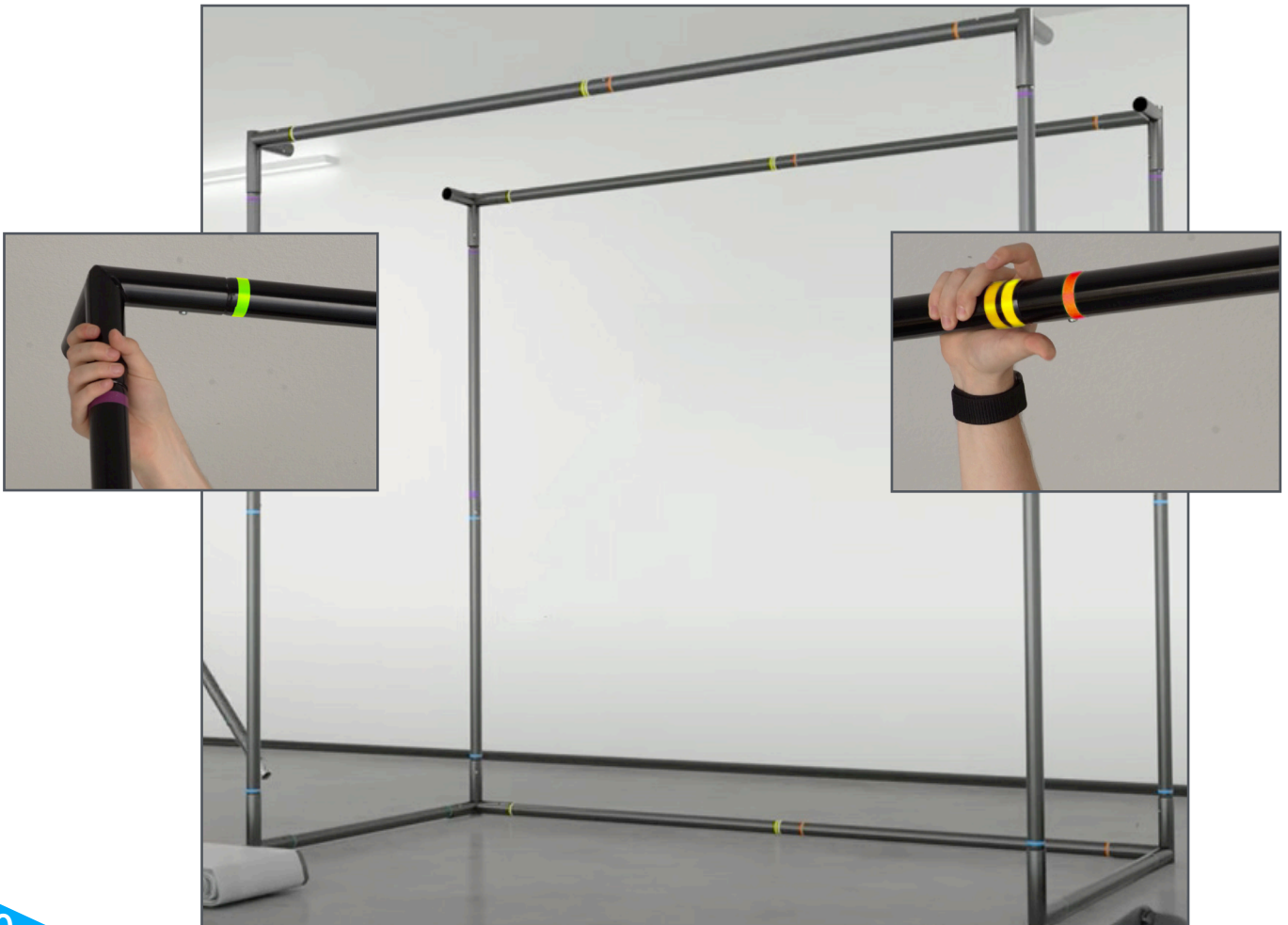
Connect (4) PURPLE poles to the BLUE uprights to complete the vertical assembly. Next, attach the (4) remaining 3-way connectors to the open ends of the PURPLE poles.



# FRAME ASSEMBLY

6

Start with the back section and attach (1) ORANGE pole to the back-right 3-way connector. After, attach (1) YELLOW pole to the ORANGE pole and then attach that YELLOW pole to the back-left 3-way connector. Repeat these same steps for the front facing upper section.



# FRAME ASSEMBLY

7

To complete the frame structure, attach the (2) remaining GREEN poles to the open 3-way connectors at the top.



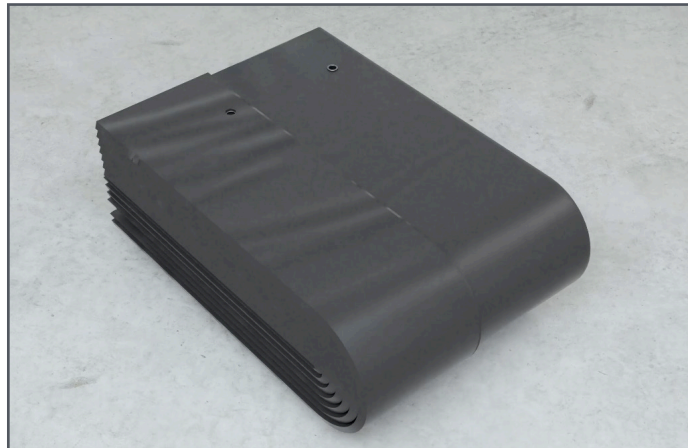


# ENCLOSURE ASSEMBLY

## A

In this section, you will attach the black surround to the frame, along with the impact screen. You will need a ladder and it is recommended to have an additional person to assist with the following steps.

Unfold the black surround and position it to the outside of the frame.



1) Make sure that the velcro strips of the surround will be facing the inside of the frame.

2) Make sure the grommet holes of the surround are positioned along the back of the frame.



# ENCLOSURE ASSEMBLY

**B**

Unfurl the black surround and bring it over the top of the GREEN pole (with the assistance of another person), and bring the surround across the structure so that it crosses atop the opposite GREEN pole and then down the opposite side of the frame.



Once the black surround is in place, remove the velcro cover strips to begin wrapping the surround panels around the poles.

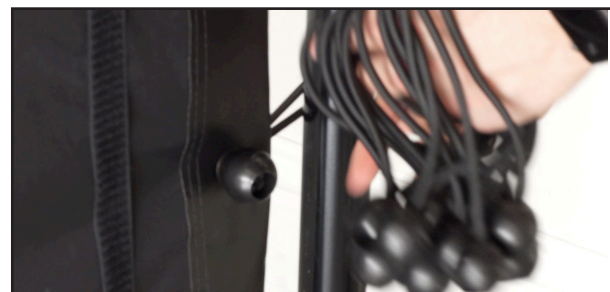
# ENCLOSURE ASSEMBLY



**TIP:** Start by connecting the bottom flaps of the black surround by sliding the inside piece under the bottom pole and then folding it up to secure it with the velcro strip.



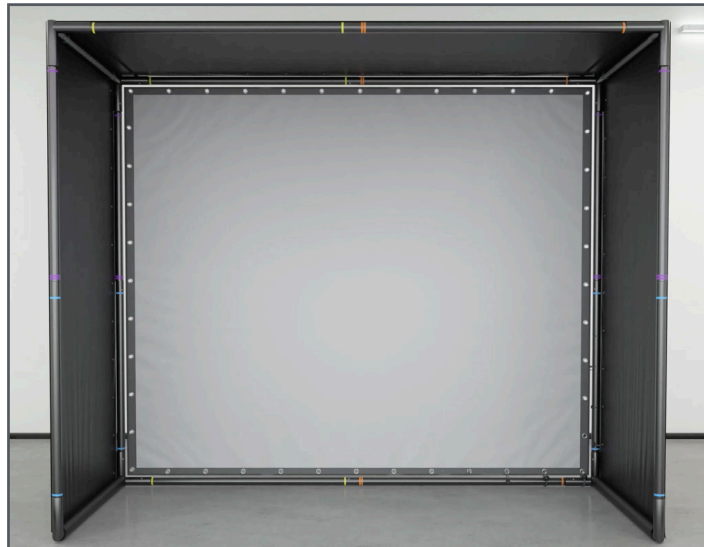
Once the velcro is in place, connect the black surround with the bungee balls. Remember to position the balls to the inside of the enclosure. Continue connecting the surround with bungee balls and then move on to impact screen.



# ENCLOSURE ASSEMBLY

**D**

**TIP:** Before handling the impact screen, wash your hands thoroughly to avoid blemishes or stains on the white material. And make sure the floor is clean too.



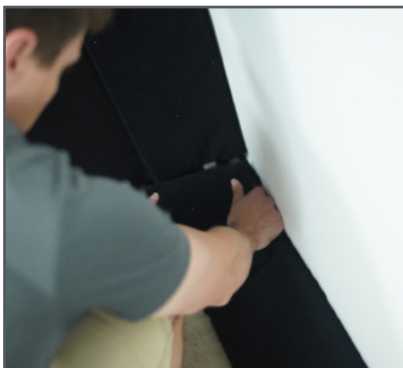
Begin by using (4) bungee balls to attach the screen to the four corners. The bungee cord should be threaded through the grommet holes in the screen, then wrapped around the pole. Make sure the bungee ball is positioned outside of the enclosure. Repeat the bungee ball attachment through every grommet hole of the impact screen. Move to the back of the screen and enclosure to attach the back flaps along the uprights. These flaps will conceal the bungee balls for a finished look.



# ENCLOSURE ASSEMBLY

**E**

The (4) foam pads can now be added to the enclosure. There are (2) long pads that will be attached to the velcro along the top and bottom of the screen, and (2) shorter pads that will attach to the two sides of the screen.



Match the angle pieces of the foam (similar to a picture frame) to complete the finished look of the screen. Press along the top, bottom and down the sides to make sure the foam is completely attached to the enclosure.



# ENCLOSURE ASSEMBLY

**F**

To complete the enclosure and to protect walls, windows, and others from errant golf shots, add the side barrier netting to the sides of the enclosure. Simply attach the velcro side of the net along the front poles and black surround velcro strip.



Start at the bottom with the velcro and run it up the pole as high as possible. Once attached, the net can be extended outward and connect to the provided sandbag. Fill the sandbag with the appropriate amount of sand that will then keep the side barrier netting extended and taut.

